


Order Code	Description
<input type="checkbox"/> 200C1	PosiTector Standard with 200 C Probe
<input type="checkbox"/> 200C3	PosiTector Advanced with 200 C Probe

PosiTector²⁰⁰

Coating Thickness Gage

Compare PosiTector Gage Bodies

Features	Standard	Advanced
Measure total thickness of a coating system	●	●
Measure up to 3 individual layer thicknesses in a multi-layer coating system		●
Graphics readout for detailed analysis of the coating system		●
Statistics Mode — Instantly calculate average, standard deviation, min/max thickness and number of readings while measuring	●	●
Two year warranty on body AND probe	●	●
Reading Storage Capacity	250 per probe	100,000 in up to 1,000 batches
Onscreen Batch Annotation — Add notes, change batch names and more with built-in QWERTY keyboard		●
Multiple stored calibration adjustments for measuring on a variety of substrate conditions		●
Connection Options		
Sealed USB port for fast, simple connection to a PC and to supply continuous power. USB cable included.	●	●
 Bluetooth 4.0 technology for data transfer to a mobile device running the PosiTector App or optional portable printer. BLE API available for integration into third-party software.		●
WiFi technology wirelessly synchronizes with PosiSoft.net and downloads software updates		●



Removeable Cabled Probe	Probe Model 200C	
	Typical Applications:	Coatings on concrete, fiberglass, etc.
	*Measurement Range:	50 to 3800 μm 2 to 150 mils
	*Accuracy:	$\pm (2 \mu\text{m} + 3\% \text{ of reading})$ $\pm (0.1 \text{ mil} + 3\% \text{ of reading})$
	**Minimum Individual Layer Thickness:	50 μm 2 mils
	Certified Thickness Standard	STDP6 Visit www.defelsko.com/coating-thickness-standards for more details.
<p>*Range limits apply to polymer based coatings only. **For multiple layer applications only. Dependent on material to be tested.</p>		

200C probe measures coating thickness over concrete, fiberglass and other non-metal substrates using ultrasonic technology.

Order Code	Description
<input type="checkbox"/> 200C1	PosiTector Standard with 200 C Probe
<input type="checkbox"/> 200C3	PosiTector Advanced with 200 C Probe

All Gages Feature...

Simple

- Ready to measure — no adjustment required for most applications
- Enhanced one-handed menu navigation
- Flashing display — ideal in a noisy environment
- RESET feature instantly restores factory settings

Durable

- Solvent, acid, oil, water and dust resistant — weatherproof
- Shock-absorbing, protective rubber holster with belt clip
- Two year warranty on gage body AND probe

Accurate

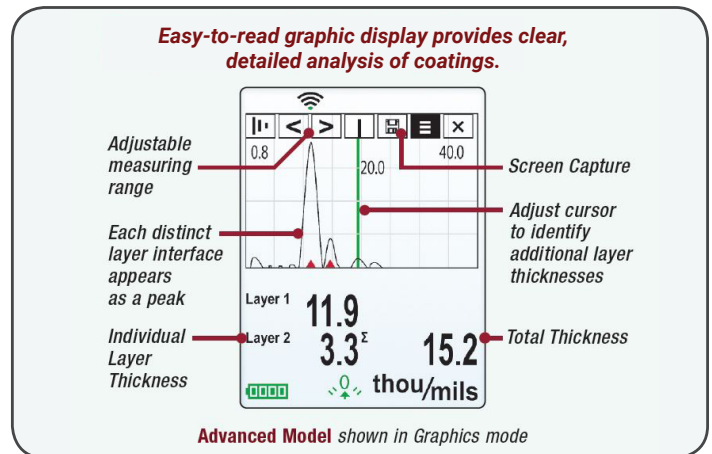
- Certificate of Calibration showing traceability to NIST or PTB included (Long Form)
- Responsive transducers provide fast, accurate readings
- Proven non-destructive ultrasonic technique conforms to ASTM D6132 and ISO 2808

Versatile

- High Contrast LCD with backlit display
- MILS/Mircons switchable
- Selectable display languages
- Flip display enables right-side-up viewing
- Uses alkaline or rechargeable batteries (built-in charger)

Powerful

- Statistics mode continually displays/updates average, standard deviation, min/max thickness and number of readings while measuring
- Screen Capture — save screen images for record keeping and review
- Sealed USB port for fast, simple connection to a PC and to supply continuous power. USB cable included.
- Software updates via web keep your gage current
- Every stored measurement is date and time stamped
- Software Solutions for viewing, analyzing & reporting data. See page 3 for a complete overview of these options.



Comes complete with PosiTector gage body, 200C probe, couplant (ultrasonic gel), precision plastic shims, protective rubber holster with belt clip, wrist strap, 3 AAA alkaline batteries, instructions, protective lens shield, convenient carrying case, Long Form Certificate of Calibration traceable to NIST or PTB, USB cable, PosiSoft Software, two (2) year warranty.

SIZE: 135 x 61 x 28 mm (5.25" x 2.4" x 1.1")

BODY WEIGHT: 140 g (4.9 oz.) without batteries

CONFORMS TO: ASTM D6132 and ISO 2808

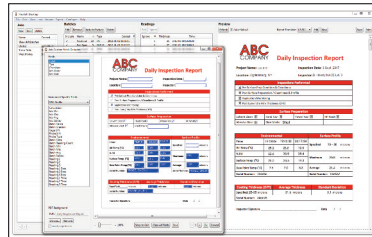
PosiSoft® Suite of Software

Four FREE and unique ways to view and report your PosiTector and PosiTest data

PosiSoft Desktop — PC/Mac

Powerful desktop software for downloading, viewing, printing and archiving measurement data. No internet connection required.

- Import readings directly from the gage via USB or from legacy PosiSoft desktop versions
- Synchronize measurement data including readings, notes and pictures to and from PosiSoft.net
- Import/Export Templates and Jobs to share with other users
- Import PDF forms and overlay **Custom Fields** for automatic population of inspection and measurement data
- Report preview automatically refreshes as changes are made



Prompted Batch Mode

Create pre-defined batches with onscreen text and image prompts for each reading and upload to PosiTector 6000 gages (Advanced models only).

- Ideal for ensuring a consistent measurement pattern for repetitive jobs or when specific measurement locations are required
- Create and store multiple templates for different jobs



PosiTector App — Mobile

Mobile app connects PosiTector Advanced instruments, the PosiTector SmartLink and the PosiTest AT-A to your *iOS* or *Android* smart device.

- Auto pairing Bluetooth BLE connection
- Automatically generate user-formatted reports and share via email, text, cloud storage services like Dropbox, and more
- Export readings to PosiSoft Desktop or synchronize readings to and from PosiSoft.net for further reporting and archival options

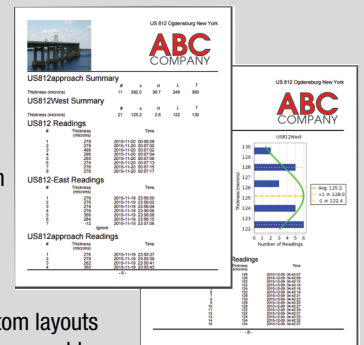


PosiSoft Custom PDF Report Generator

Easily create reports from your measurement data in seconds.

featured on
PosiSoft Desktop
PosiSoft.net
PosiTector App

- Include inspection information such as on-site pictures, screen captures, notes and more to communicate important details
- Create and save multiple custom layouts as templates – insert cover pages, add logos/images, and select font and point size
- Select the information to include for each product type – charts, histograms, readings, time stamps and more
- Compile multi-batch reports from one or more probes and instrument types
- Export readings as comma separated value (.CSV) files which can easily be imported into Excel and other supporting applications

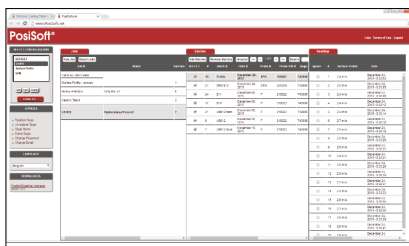


Jobs feature consolidates batches into groups to keep measurement data organized and to quickly create multi-batch reports (not available on PosiTector App)

PosiSoft.net — Web-based

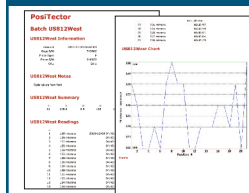
A web-based application offering secure centralized management of readings. Access your data from any web-connected device.

- Synchronize data when connected via USB or WiFi
- Synchronize measurement data including readings, notes and pictures with PosiSoft Desktop and PosiTector App
- Securely store measurement data in the cloud and share with authorized users via a secure login



Jobs Batches Readings

PosiSoft USB Drive — Gage Based



A simple gage interface to retrieve data in a manner similar to USB flash drives, cameras, or digital audio players. No software to install or internet connection required.

- View and print readings and graphs using universal PC/Mac web browsers and file explorers
- Measurement data can be printed quickly from a formatted HTML report or exported in .CSV format for further analysis in spreadsheets
- Simple file management - Copy and paste measurement data from the PosiTector to a local folder on your computer, network folder or cloud drive
- Access stored screen captures (snapshots) of the PosiTector display

PosiTector and PosiTest AT-A instruments can integrate with third-party software, drones, ROVs, PLCs, and robotic devices using several industry-standard communication protocols.

PosiTector Developer Resources
including Bluetooth 4.0, WiFi,
USB Keyboard, and USB Serial

©DeFelsko Corporation USA 2017. All Rights Reserved. Technical Data subject to change without notice. • P200.v.LW/W1710

